

CORRECTIONS AND ADDITIONS

Volume **126**, Number 1 (1997), in Article No. MN971143, “A General Approach to Error Estimation and Optimized Experiment Design, Applied to Multislice Imaging of T_1 in Human Brain at 4.1 T,” by Graeme F. Mason, Wen-Jang Chu, and Hoby P. Hetherington, pages 18–29: Due to a printer’s error, Figs. 5 and 6 on pp. 22–24 were printed incorrectly. For the reader’s convenience, the figures are reproduced on the following pages.

This correction is Article No. MN971210.

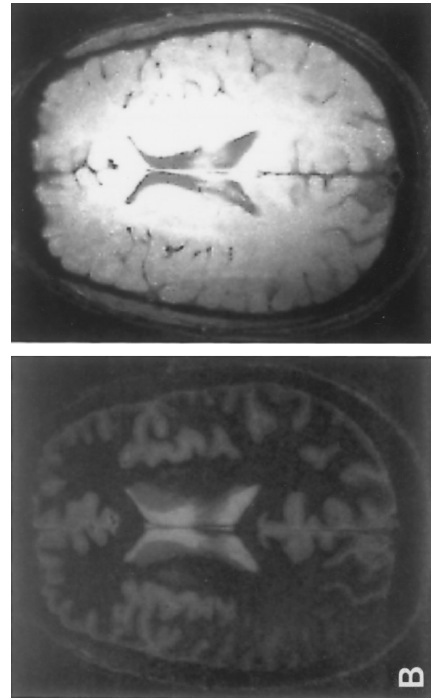
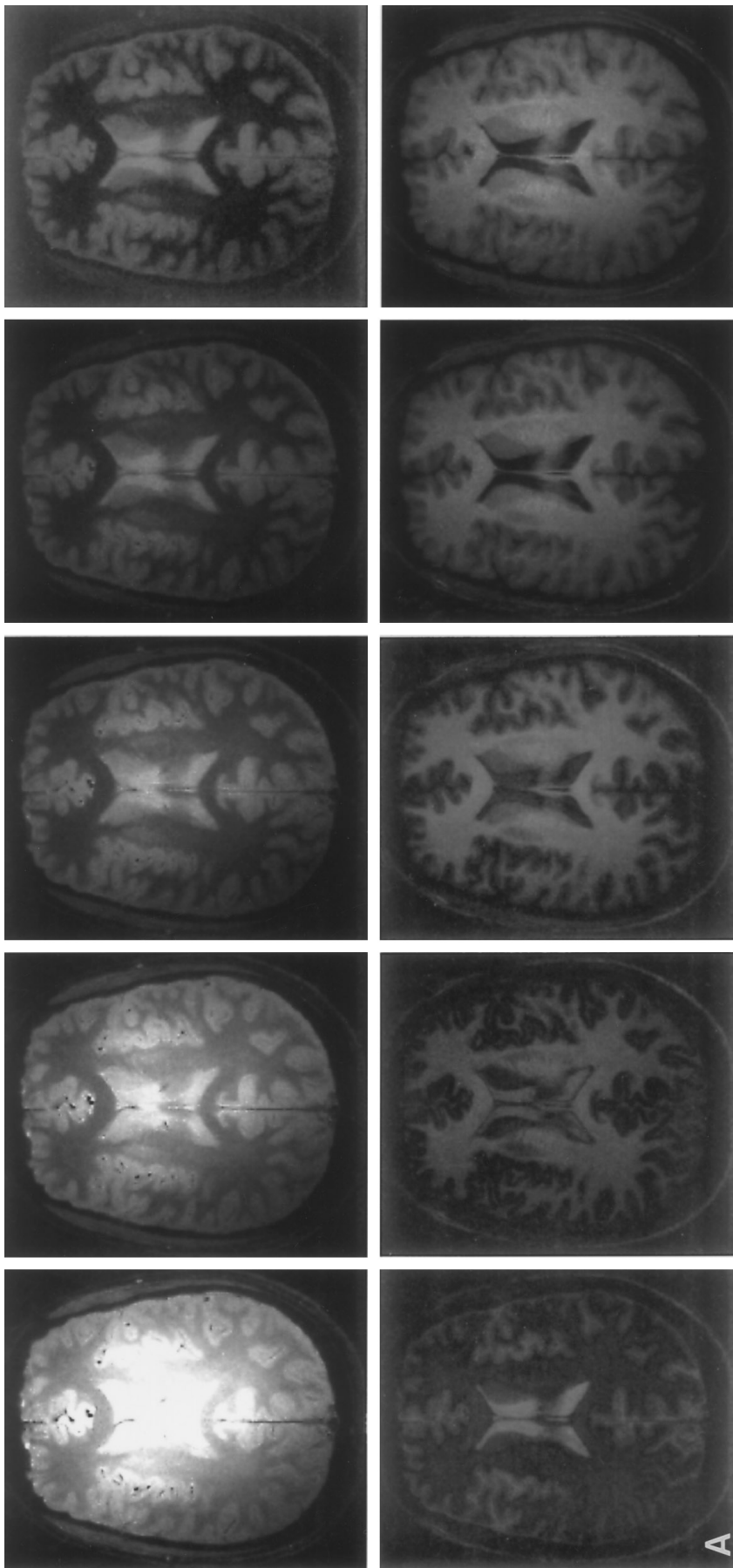


FIG. 5. Image time courses from the T_1 measurement. (A) Ten-point image series. (B) Two-point image series.

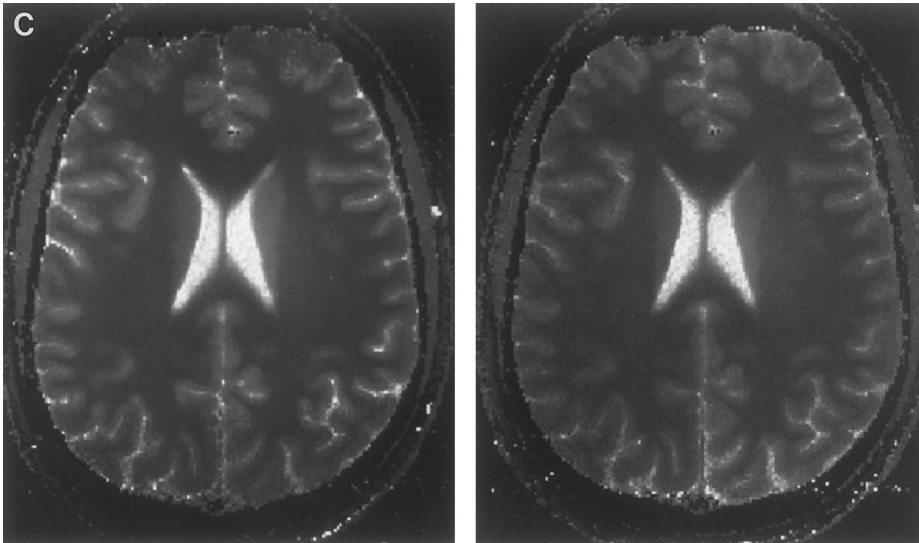
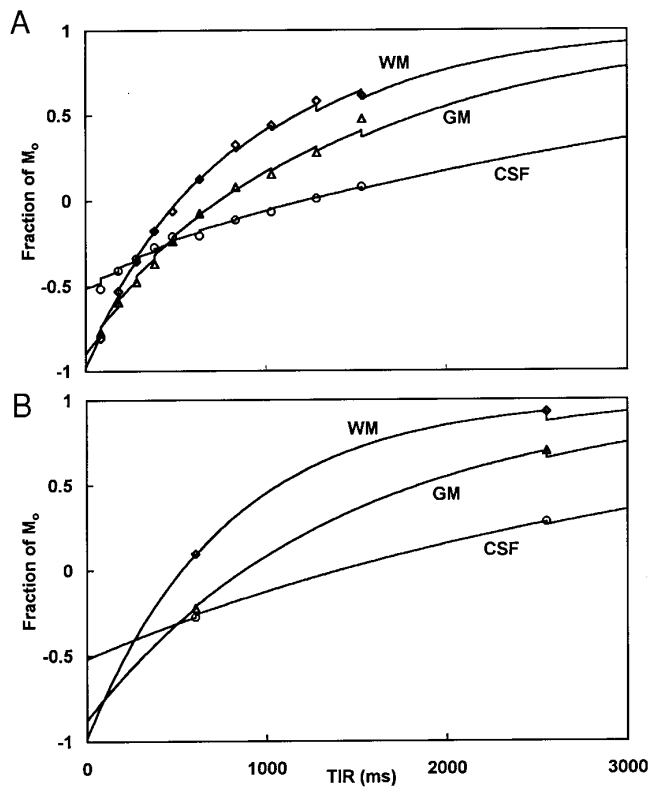


FIG. 6. Time courses of image pixel intensities for the image series in Fig. 5, with least-squares fits superimposed. Fits are shown for (A) 10-point T_1 imaging and (B) 2-point T_1 imaging. The exponential behavior of the inversion recovery curves is interrupted periodically by the 20° excitation used to sample the curve, and the effect of this behavior was included in the fit. (C) Fitted T_1 images are also shown for the 10-point and 2-point series of Fig. 5.